

Serious Harm Accident Summary 2003

Definitions

- **Serious Harm means death or**
 1. Any of the following conditions that amounts to or results in permanent loss of bodily function, or temporary severe loss of bodily function: respiratory disease, noise-induced hearing loss, neurological disease, cancer, dermatological disease, communicable disease, musculoskeletal disease, illness caused by exposure to infected material, decompression sickness, poisoning, vision impairment, chemical or hot metal burn of eye, penetrating wound of eye, bone fracture, laceration, crushing.
 2. Amputation of body part.
 3. Burns requiring referral to a specialist registered medical practitioner or specialist outpatient clinic.
 4. Loss of consciousness from lack of oxygen.
 5. Loss of consciousness, or acute illness requiring treatment by a registered medical practitioner, from absorption, inhalation, or ingestion, of any substance.
 6. Any harm that causes the person harmed to be hospitalised for a period of 48 hours or more commencing within 7 days of the harm's occurrence.
- **SHIFR** means Serious Harm Injury Frequency Rate, which is the number of serious harm injuries per million hours worked.



TABLE 3:

ALL SURFACE MINES AND QUARRIES
CLASSIFICATION BY BODY PART

A Head: 2	G Hand: 6
B Eye: 0	H Arm: 5
C Body: 0	I Internal: 1
D Back: 0	J Multiple: 4
E Leg: 1	K Senses: 1
F Foot: 2	Total: 22

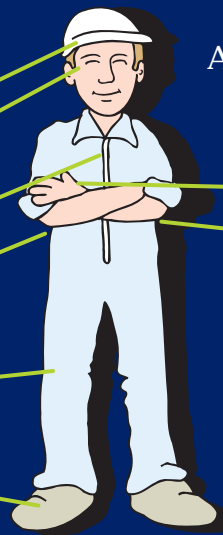


TABLE 4:

ALL MINES, COAL MINES,
QUARRIES AND TUNNELS
CLASSIFICATION BY BODY PART

A Head: 2	G Hand: 8
B Eye: 0	H Arm: 6
C Body: 1	I Internal: 1
D Back: 0	J Multiple: 4
E Leg: 3	K Senses: 2
F Foot: 2	Total: 29

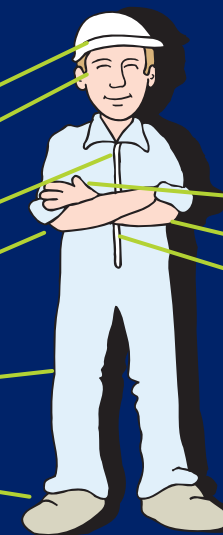


TABLE 5: ALL MINES, COAL MINES, QUARRIES & TUNNELS - MAJOR SERIOUS HARM

DATE	OPERATION	INJURY	COMMENT	No	SOURCE*	BODY PART*
7th January	Henry Walker Eltin Rotowara OCCS	Broken bones in foot	Foot caught in HIAB unit stabilising ram	1	L	F
22nd February	Henry Walker Eltin Stockton OCCS	Fractured arm	Arm trapped by falling engine belly plate	1	A	H
26th February	Adcock and Donaldson Raine Quarry	Amputation of fingers	Caught hand between handrail and striker plane on mobile screen	1	L	G
22nd April	Fulton Hogan Reliable Way Quarry, Auckland	Fatal, Multiple injuries	Caught under feed chute on conveyor while clearing blockage	1	L	J
7th May	Winstone Aggregates Quarry, New Plymouth	Fractured wrist	Caught arm in steering wheel of front end loader	1	L	H
19th June	Karamuramu Island Quarry	Broken bones in foot	Loader bucket dropped on foot	1	A	F
14th August	Higgins Aggregates Ltd, Palmerston North	Fatal, Multiple injuries	Fell into primary crusher feed bin	1	D	J
10th September	Winstone Aggregates Hunua Quarry	Multiple injuries	Dump truck flipped over backwards on tip	1	L	J

TABLE 6: ALL SURFACE MINES AND QUARRIES

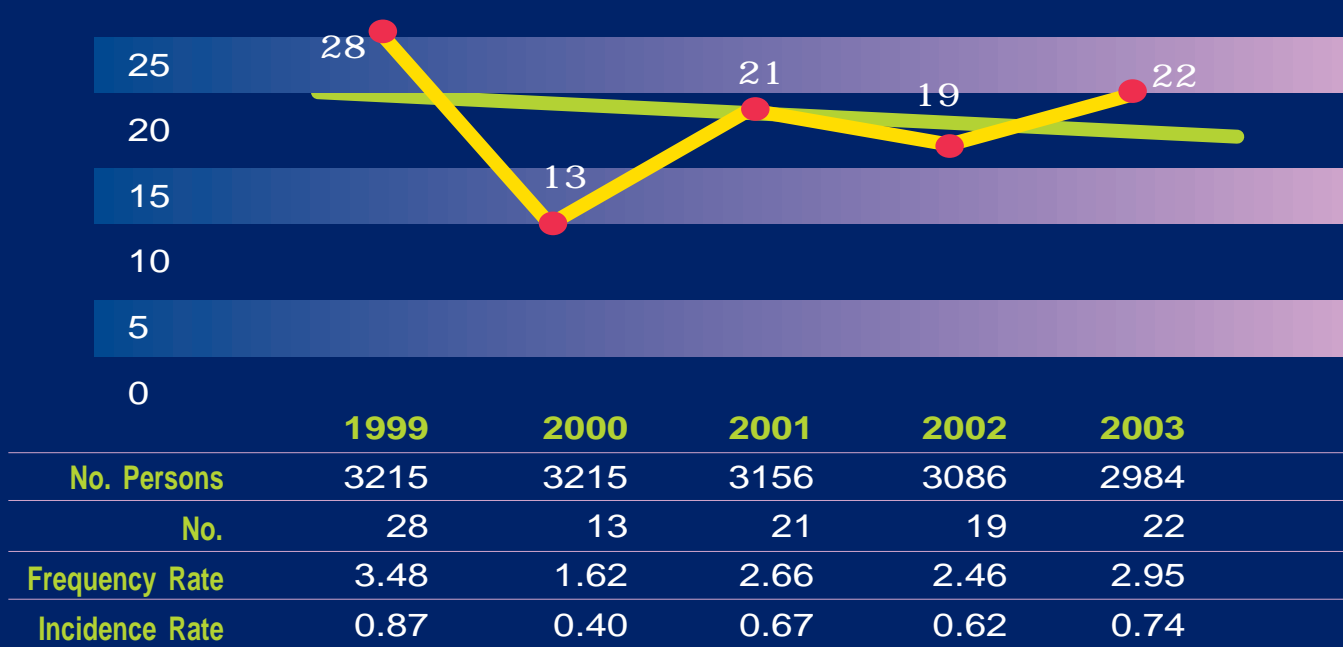


TABLE 7: ALL MINES, COAL MINES, QUARRIES & TUNNELS

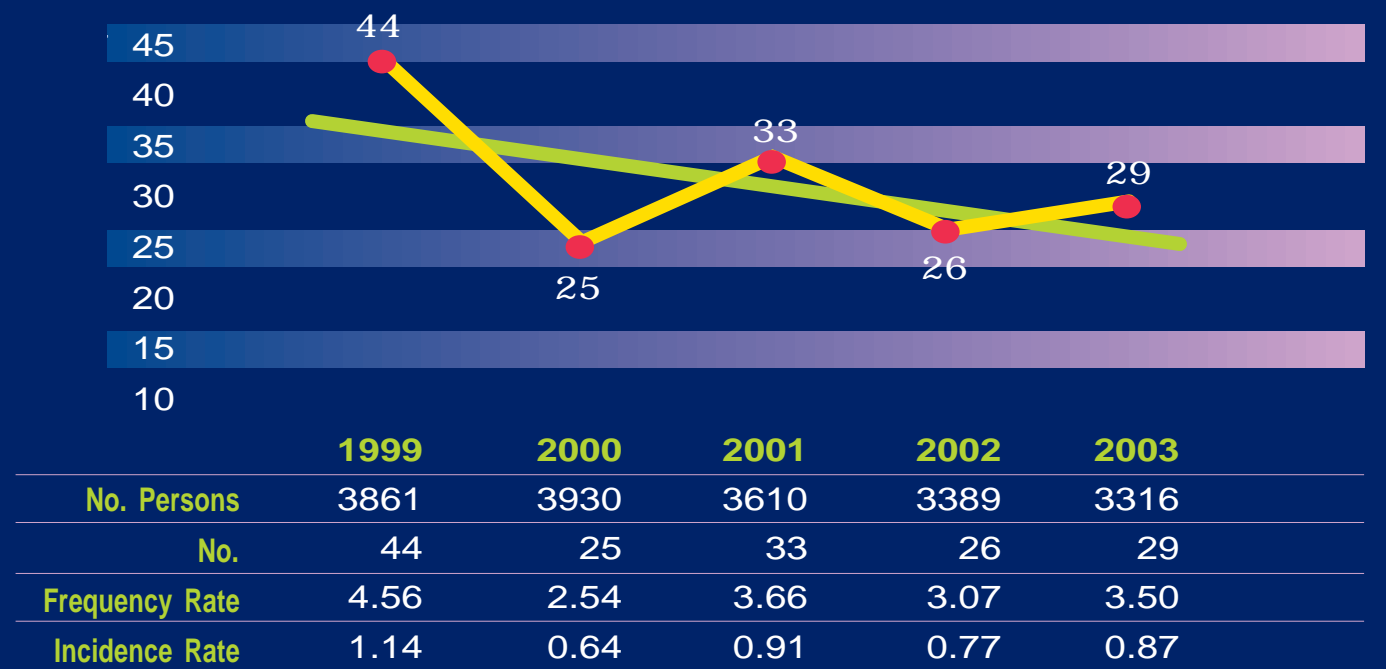


TABLE 1: CLASSIFICATION BY SOURCE
ALL SURFACE MINES AND QUARRIES

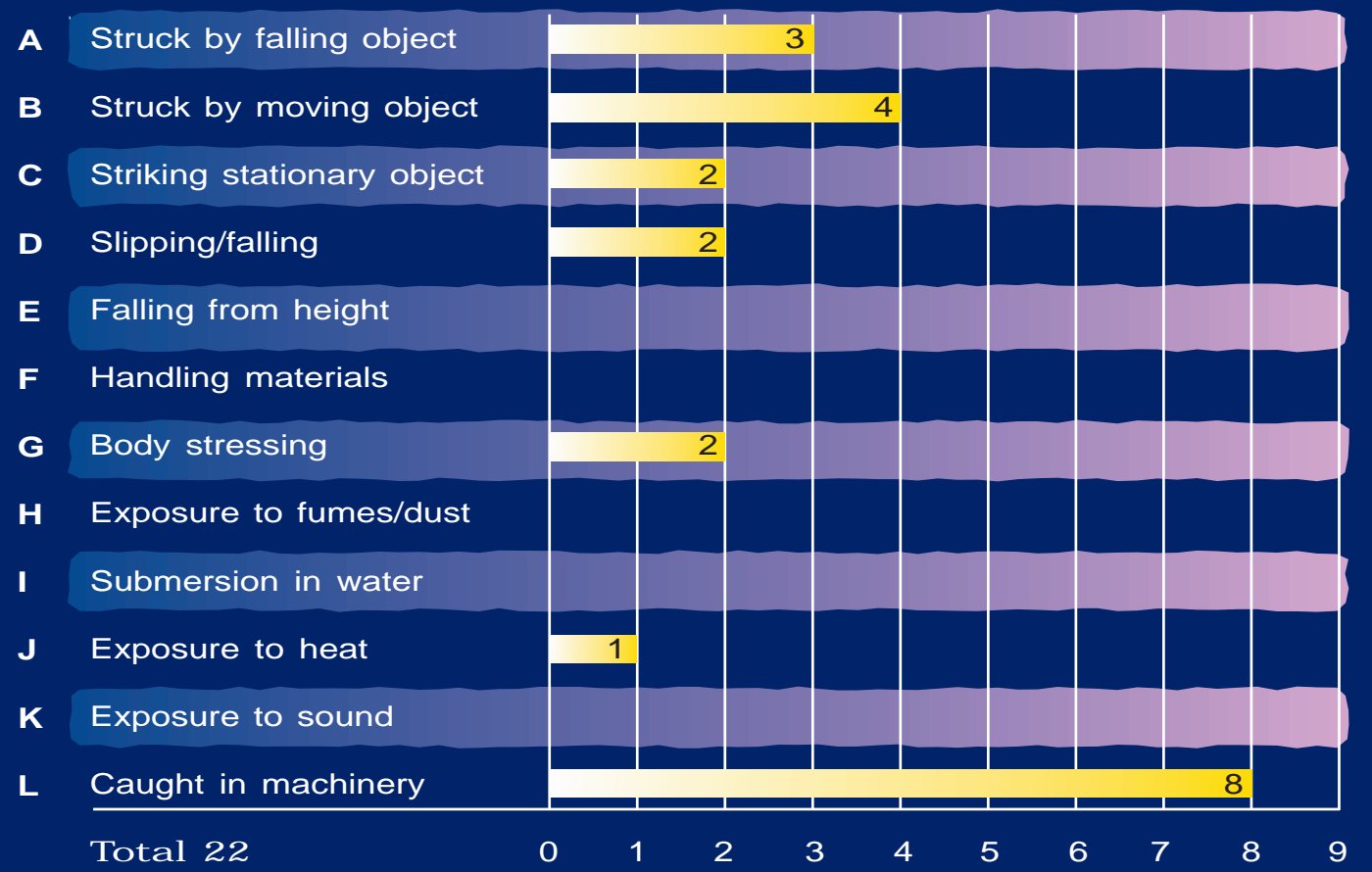


TABLE 2: CLASSIFICATION BY SOURCE
ALL MINES, COAL MINES, QUARRIES AND TUNNELS

